

Lasernet 10.1 Release Notes.

Input and Output Management

Adam McStravick
Revision 2
2021-10-29

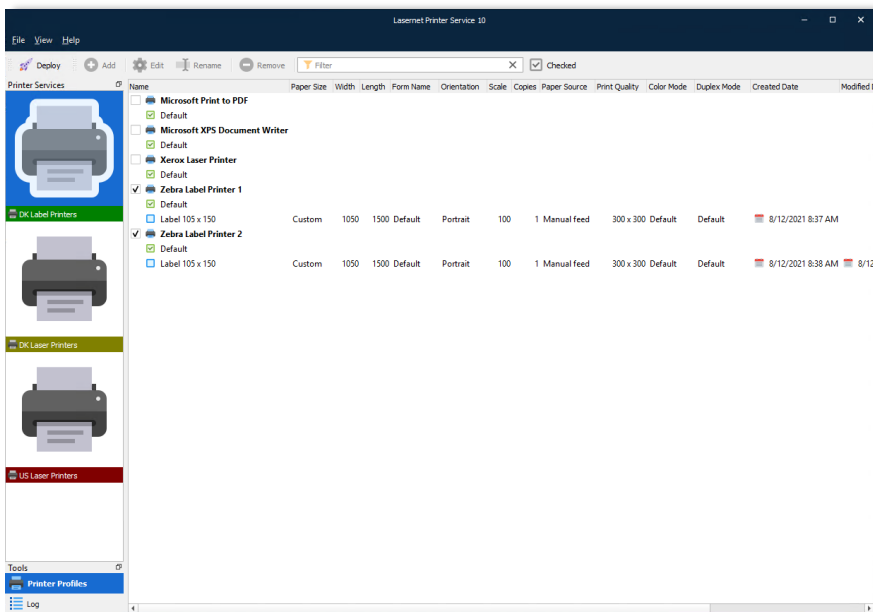
Contents.

Lasernet Printer Service.....	3
Added Support for On-premises / LAN Printing Support via Printer Service	3
Other Enhancements	3
Lasernet Config Server.....	4
Manage Access Rights for Client, Monitor and Printer Service via Security Roles on Config Server	4
Added Support for Azure AD Authentication	5
Other Enhancements	6
Lasernet Form Editor.....	7
Swiss QR Code Support	7
Added Support for Schedule Criteria to Forms.....	8
DOCX Format – Watermarks	9
DOCX Format – Tables – Repeat as Header Row.....	10
Other Enhancements	10
Lasernet Developer.....	11
Dependency Walker.....	11
Show Changes option added to the Import Objects dialog	14
Lasernet XML Transformer.....	15
Move XML Transformer Action to a Specific Index.....	15
Web Client.....	16
New Web Client URL	16
User Interface Improvements	16
Other Enhancements	16
Lasernet Monitor.....	17
Performance and Transaction Counters Separated into Two Tabs, Also Presenting Database Size For Server.	18
Support for new "Goto Log" feature by adding right-click action to Performance and Transactions charts.	19
Miscellaneous.....	20
Lasernet Launcher	20
Scripting	20
OCR Engine	21
Microsoft SQL LocalDB.....	21
FTP Output.....	22
Microsoft Windows 11.....	23
Maintenance Report.....	24

Lasernet Printer Service.

Added Support for On-premises / LAN Printing Support via Printer Service

EMF, PDF and DOCX formats are supported. Files are zipped then transferred from the Printer Service module to Printer Service application.



Other Enhancements

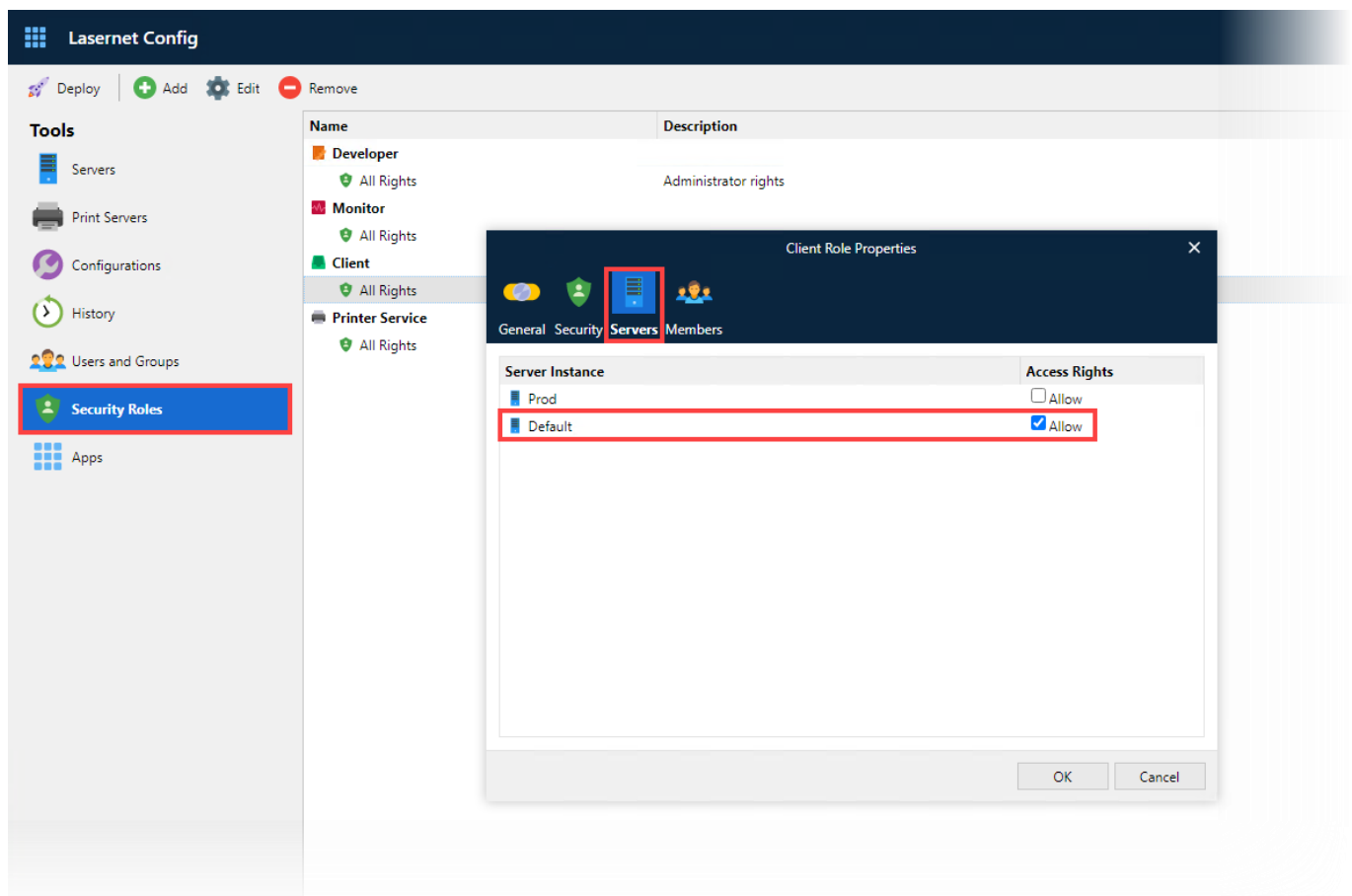
- Added support for viewing of printer service log.
- Added support for multiple printer service instances running on the same server.
- Added new Sign Out option to the Printer Service application.
- User Interface enhancements.

Lasernet Config Server.

Manage Access Rights for Client, Monitor and Printer Service via Security Roles on Config Server

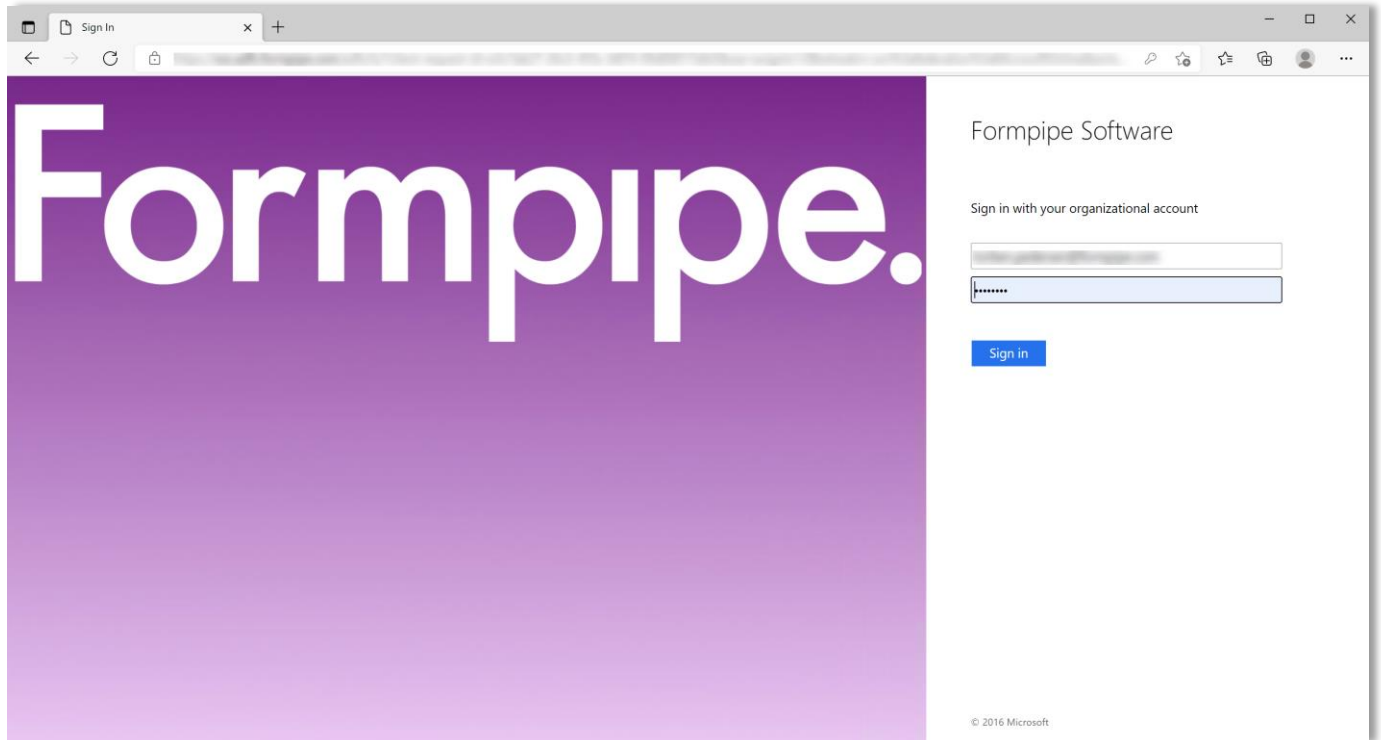
The security roles have been extended to include the instances users are allowed to access.

You can now manage Access Rights for Client Roles on the Config Server. This works in a similar way to Monitor roles.



Added Support for Azure AD Authentication

Lasernet has support for authenticating users against external authentication providers like Azure Active Directory, enabling two-factor authentication.



The matrix shows the compatibility of different authentication methods with Lasernet applications.

	User Authentication Type		
	Local	On premise AD	Azure AD
Lasernet Developer	✓	✓	✓
Lasernet Config	✓	✓	✓
Lasernet Monitor	✓	✓	✓
Lasernet Web Monitor	✓	✓	✓
Lasernet Printer Service	✓	✓	✓
Lasernet Web Client	✓	✓	✓
Lasernet Client	✓	✓	✗
Lasernet OCR	✓	✓	✗
Lasernet Meta	✓	✓	✗

Other Enhancements

- Added buttons to Lasernet License Manager and Lasetnet Config server to copy Client Secret values to the clipboard.
- Date and time format shown in regional formatting instead of UTC in Lasetnet Config server.

Lasernet Form Editor.

Swiss QR Code Support

Swiss QR Codes can be used in Lasernet. For more information on the Swiss QR Code standard, please refer to this link:

<https://www.paymentstandards.ch/dam/downloads/ig-qr-bill-en.pdf>

Note: Swiss QR Code compatibility is also being added to the Lاسernet 9 series.

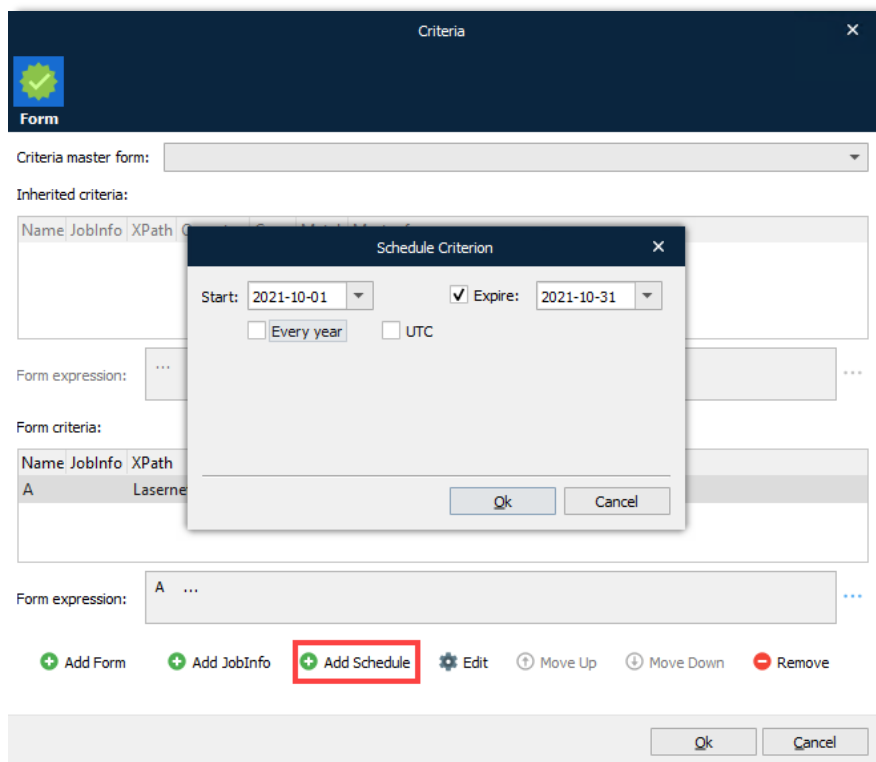


Added Support for Schedule Criteria to Forms

You can define a range of dates to your forms, sheets and objects added to forms.

Common uses are:

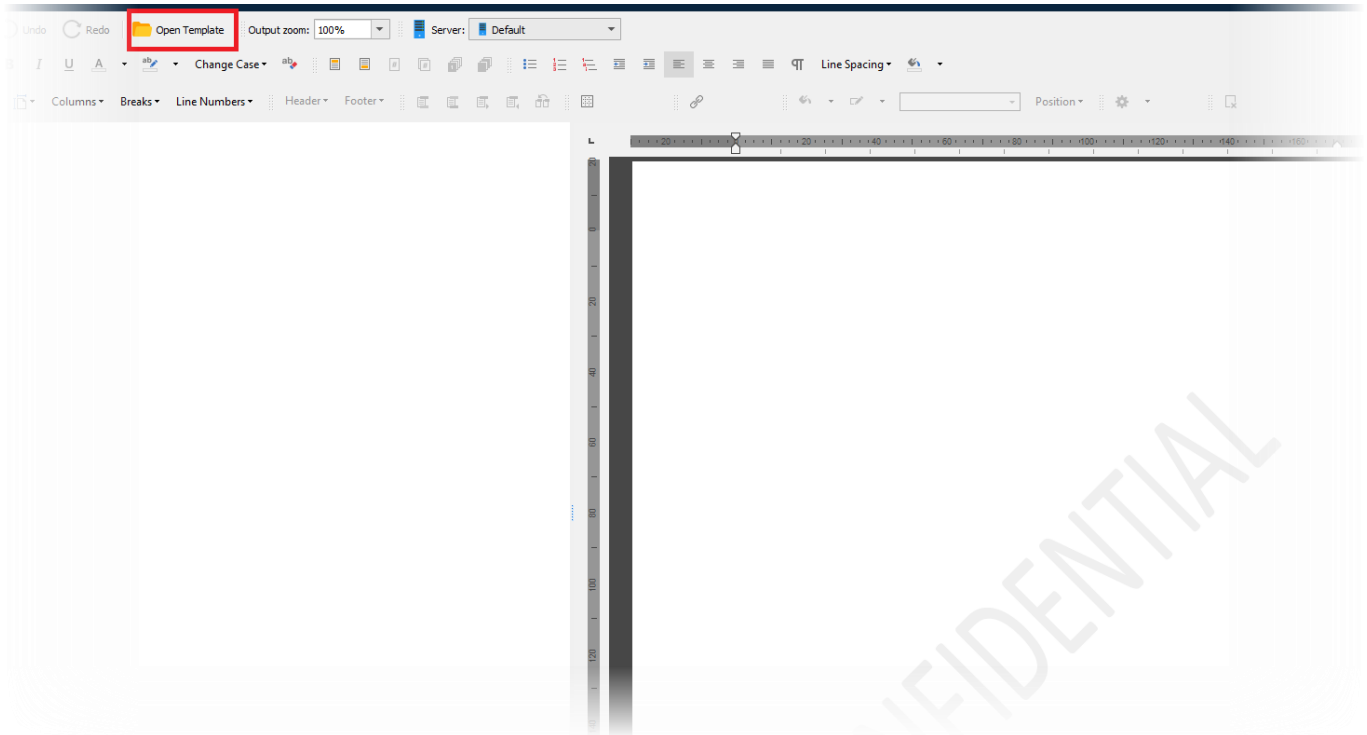
- Including a criterion that must be true when running forms and sheets at specified time periods.
- Adding announcements or messages that are only active during specified time periods. These can be set to repeat every year.



The screenshot displays the 'Criteria' configuration window. It includes a 'Form' tab with a 'Criteria master form' dropdown, a table for 'Inherited criteria', a 'Form expression' field, and a table for 'Form criteria'. A 'Schedule Criterion' sub-dialog is open, allowing users to set a date range from 'Start' (2021-10-01) to 'Expire' (2021-10-31). It also features checkboxes for 'Every year' and 'UTC'. The 'Add Schedule' button in the bottom toolbar is highlighted with a red box.

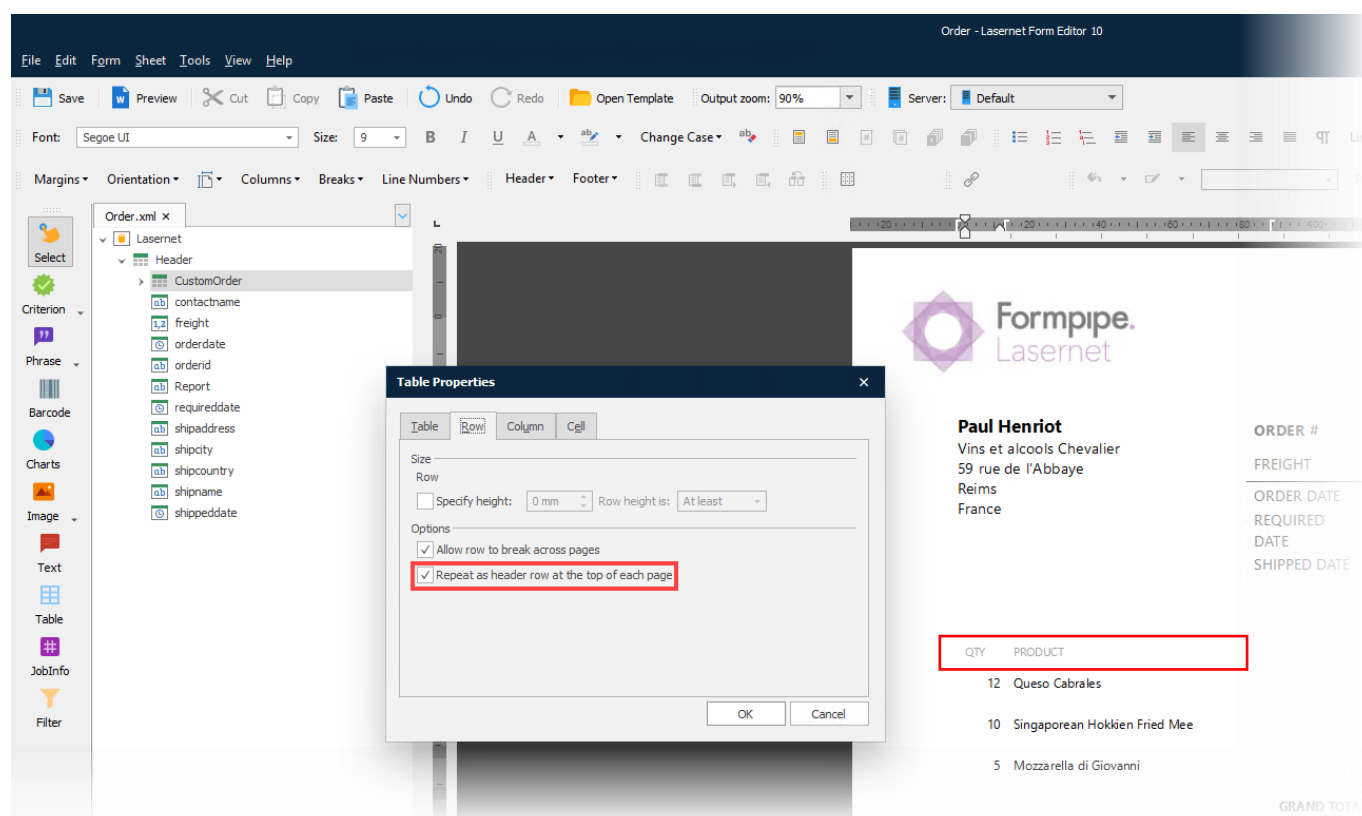
DOCX Format – Watermarks

Rich Text Control (DOCX format) documents containing watermarks will be displayed in Lasernet Form Editor.



DOCX Format – Tables – Repeat as Header Row

Added support for Repeat Row as Header for tables in Rich Text Control (DOCX format).



Other Enhancements

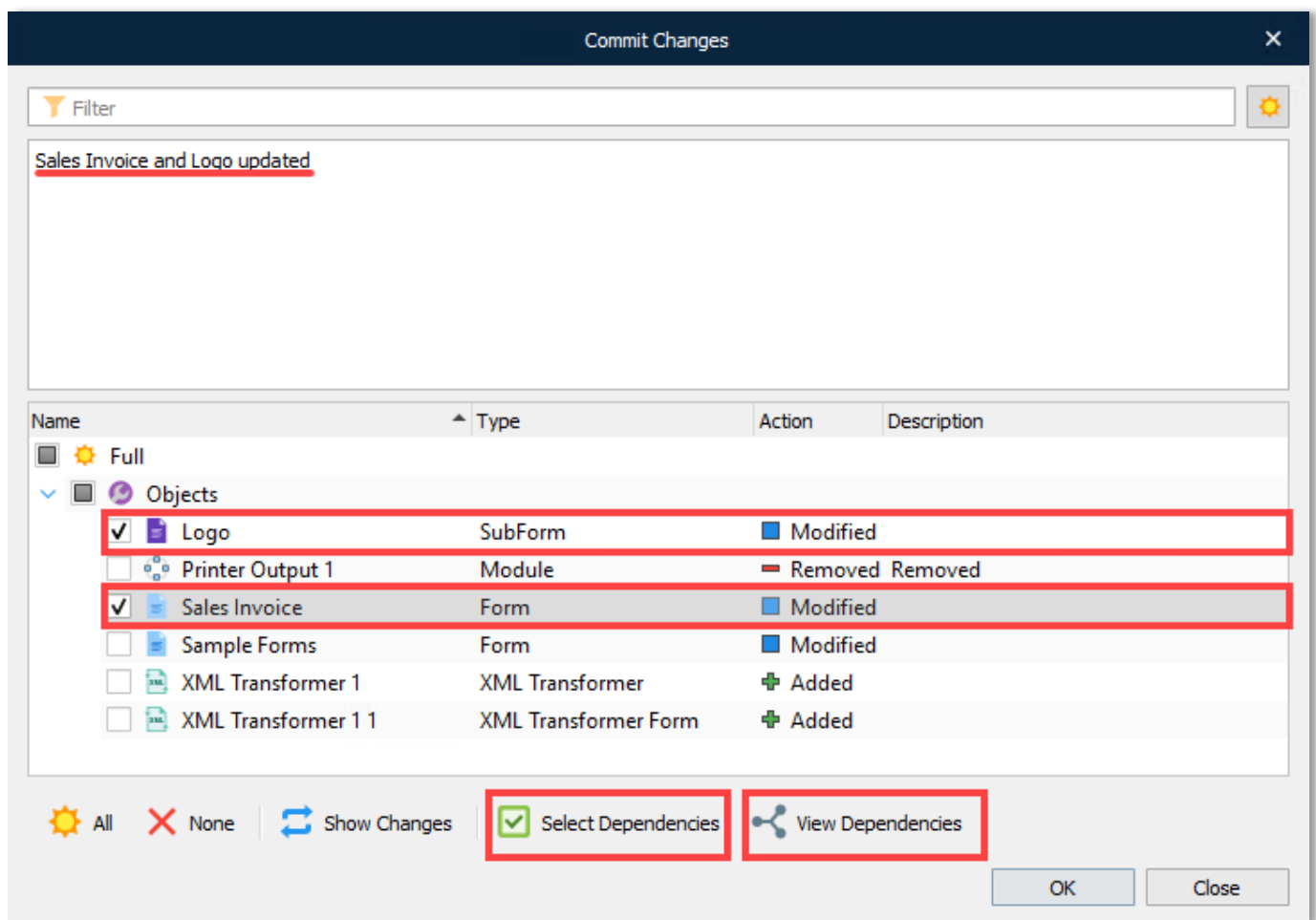
- A Description field has been added to the Pattern Properties dialog.

Lasernet Developer.

Dependency Walker

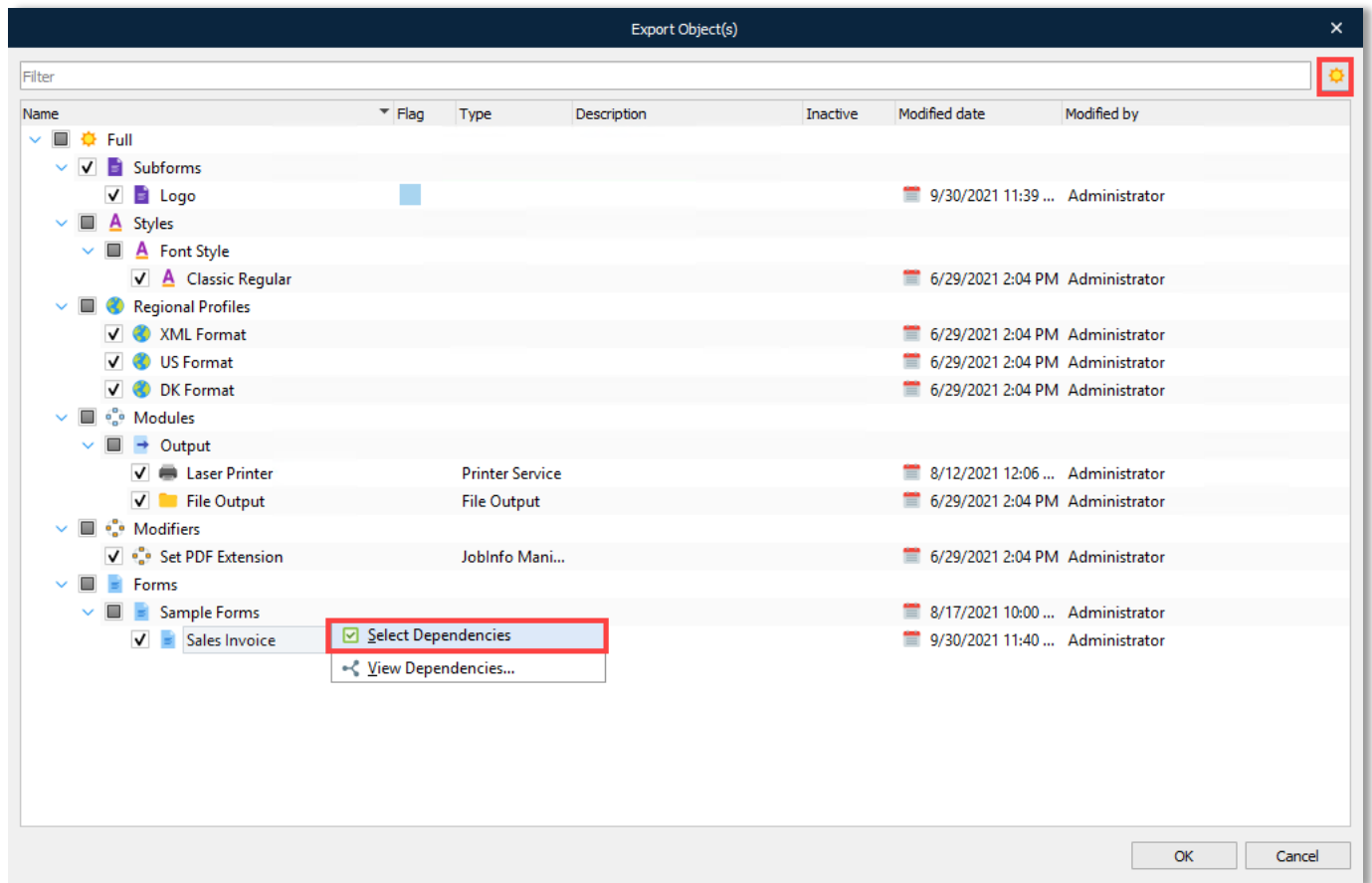
When committing changes, you can click **View Dependencies** to display all dependencies to the selected object.

Select Dependencies will automatically select all other objects, related to the selected object, that have not been committed yet.

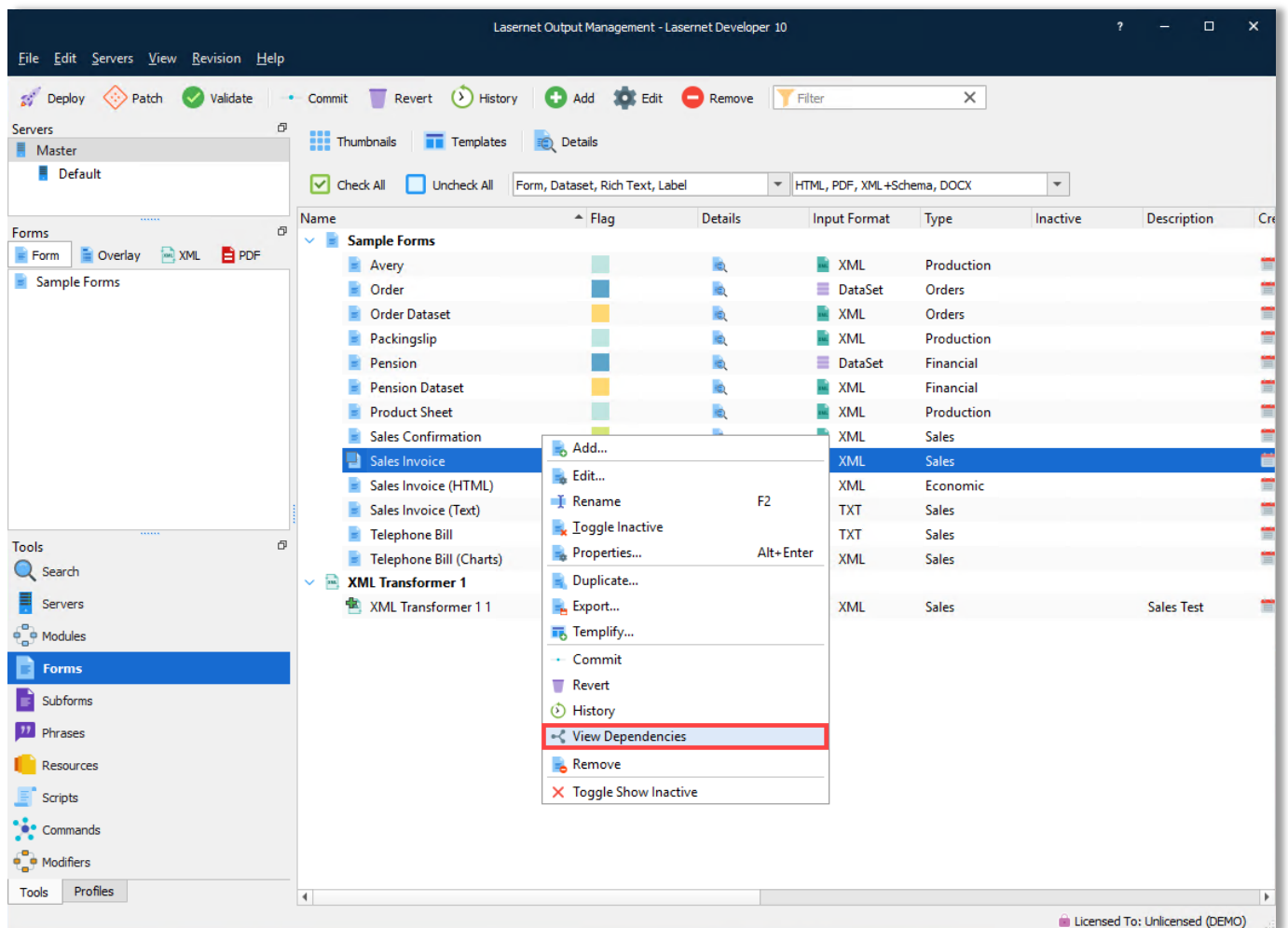


Lasernet will show only one level of dependencies related to the selected object.

Both commands have also been added to the context menu in the Exporting Object(s) dialog. This will automatically select dependencies for the selected object.

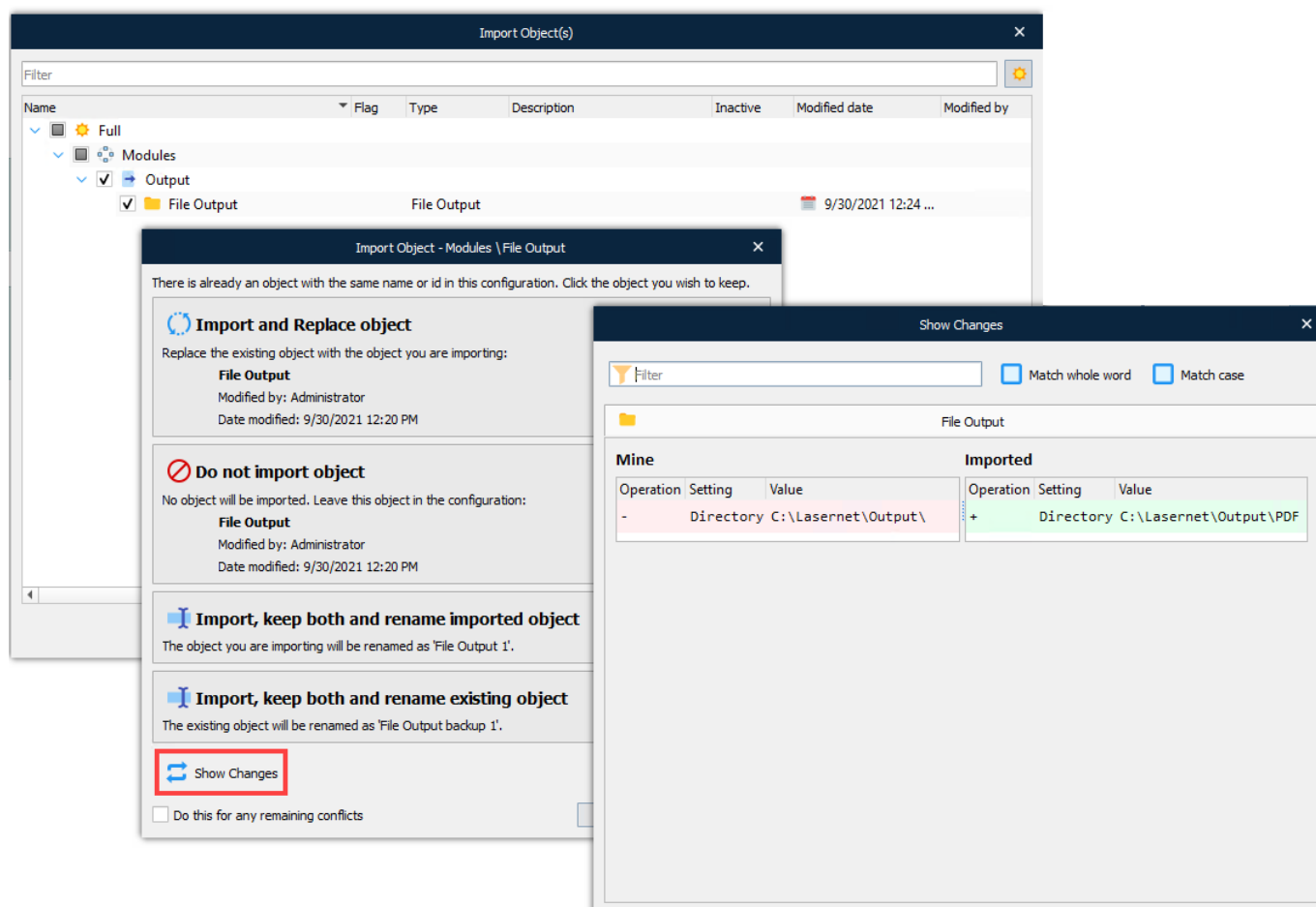


The **View Dependencies** option is also available in the right-click menu for the list of objects in modules or forms.



Show Changes option added to the Import Objects dialog

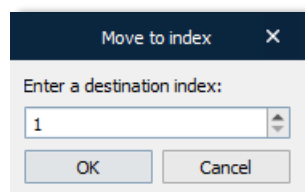
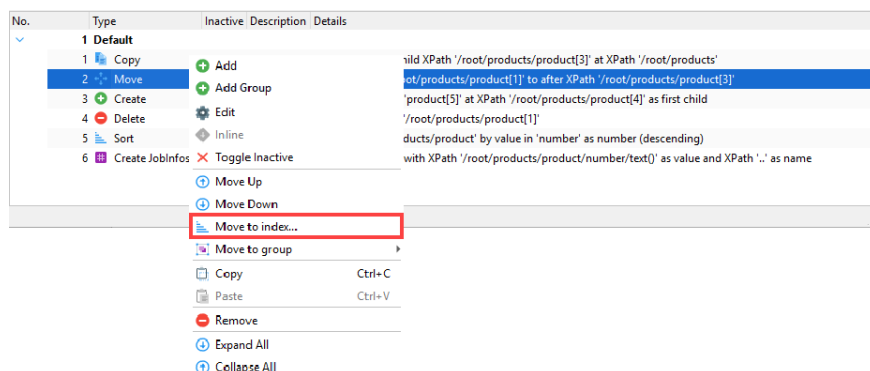
A quick access tool called **Show Changes** has been added allowing you to compare changes before accepting imported objects.



Lasernet XML Transformer.

Move XML Transformer Action to a Specific Index

The **Move to index...** option has been added to the right-click menu for the list of actions in the XML Transformer editor.



Web Client.

New Web Client URL

This has changed from:

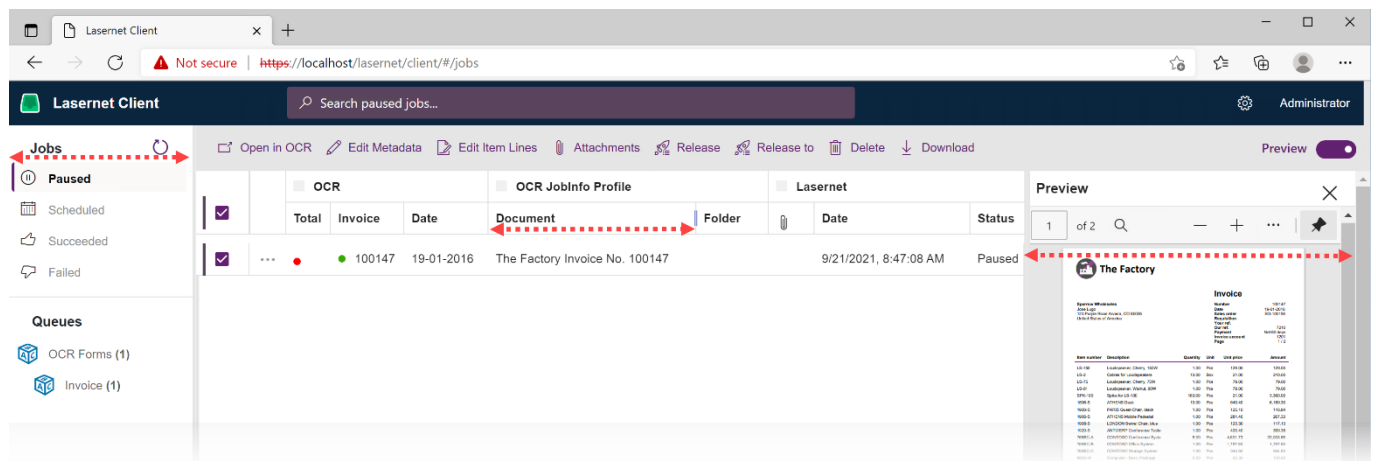
[https://\[server\]:\[port\]](https://[server]:[port])

to:

[https://\[server\]:\[port\]/lasernet/client](https://[server]:[port]/lasernet/client)

User Interface Improvements

The Preview pane and column widths for each queue type can be adjusted.



Other Enhancements

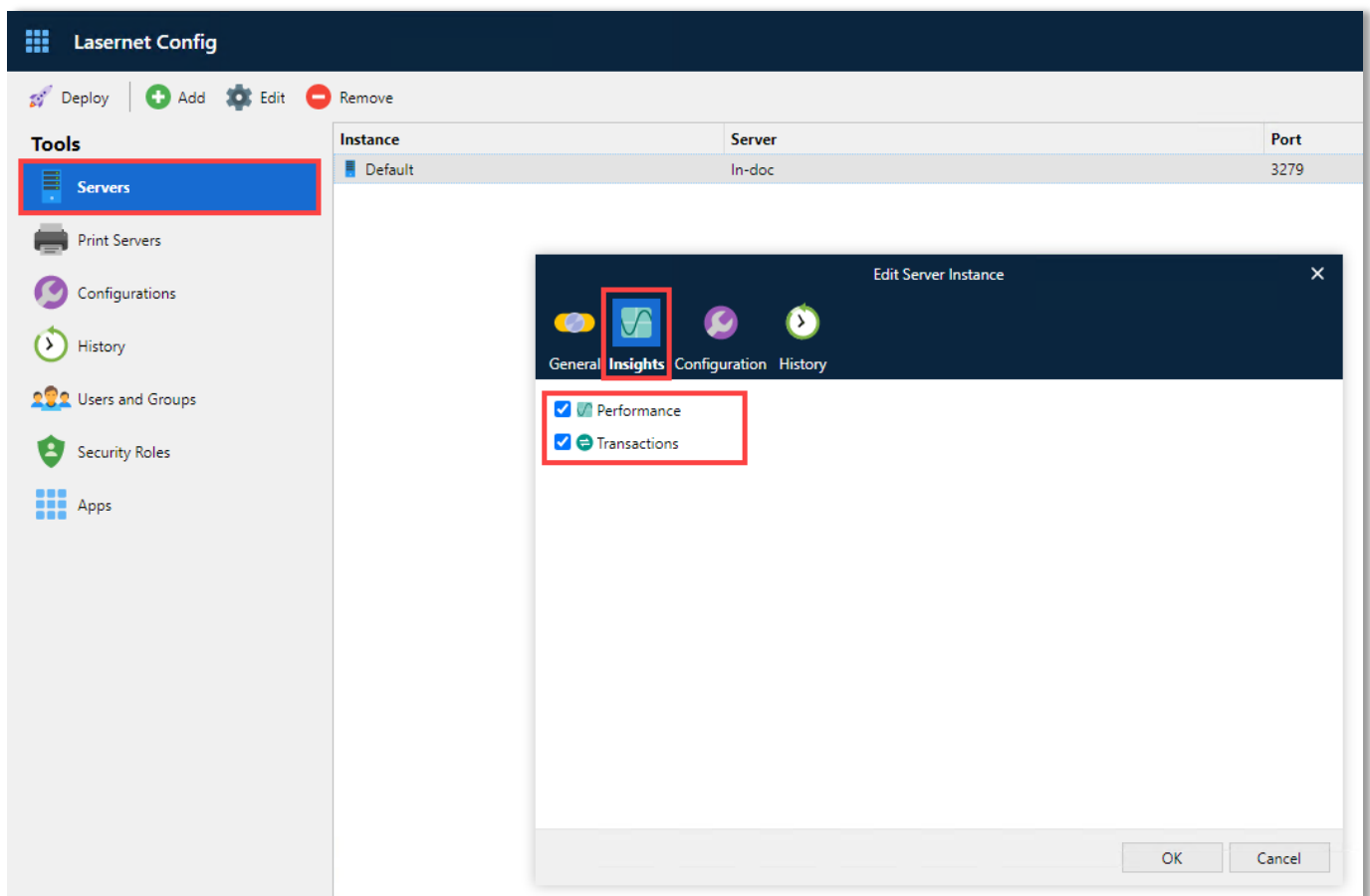
- Allows you to multi-select job list roles when you press and hold the **Ctrl** key.

Lasernet Monitor.

Lasernet 10 introduced a new feature to collect performance and transaction counters from the Lasernet servers.

For Lasernet 10.1, the feature is being expanded to cover more information by including database size. This acts as a foundation for adding more features in future releases.

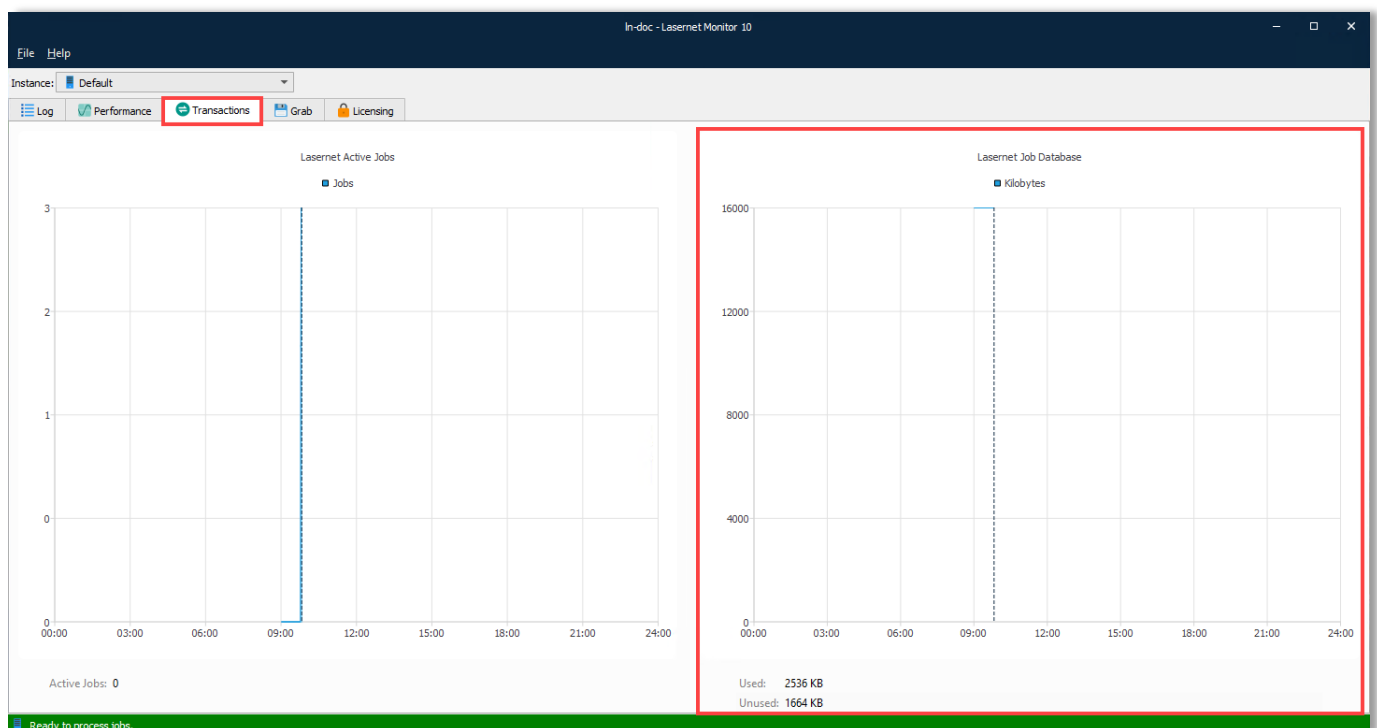
This feature must now be activated on Lasernet Config Server for each server instance via the new Insights tab.



Performance and Transaction Counters Separated into Two Tabs, Also Presenting Database Size For Server.

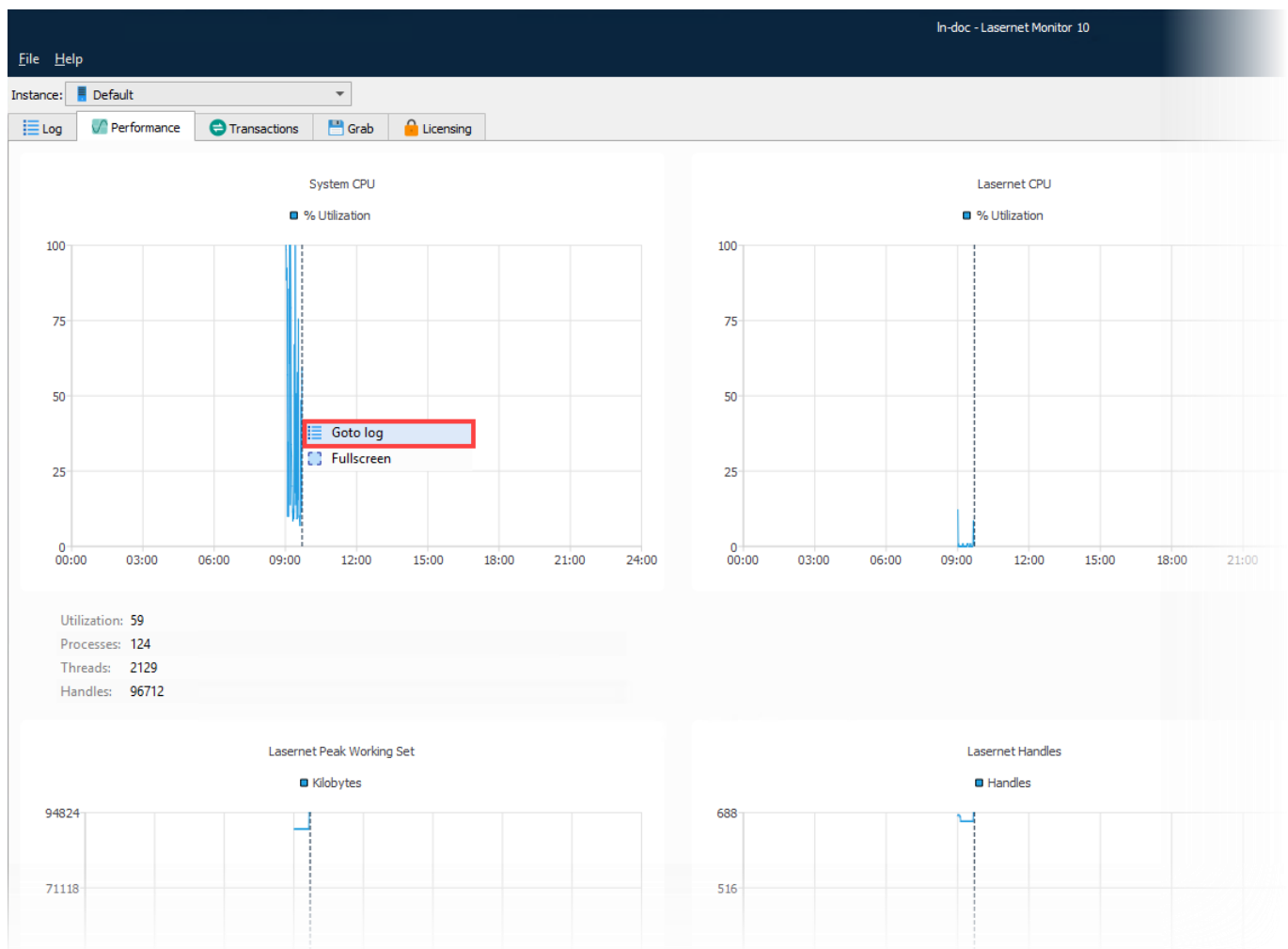
You can view live updates every minute on various aspects of server and Lasernetet performance.

A new counter has been added to show the expansion of the Lasetnet Job Database over time.



Support for new "Goto Log" feature by adding right-click action to Performance and Transactions charts.

Easily navigate to precise timestamp in the log. For example, this is useful for investigating an unexpected peak in Memory use or Handles in Windows.

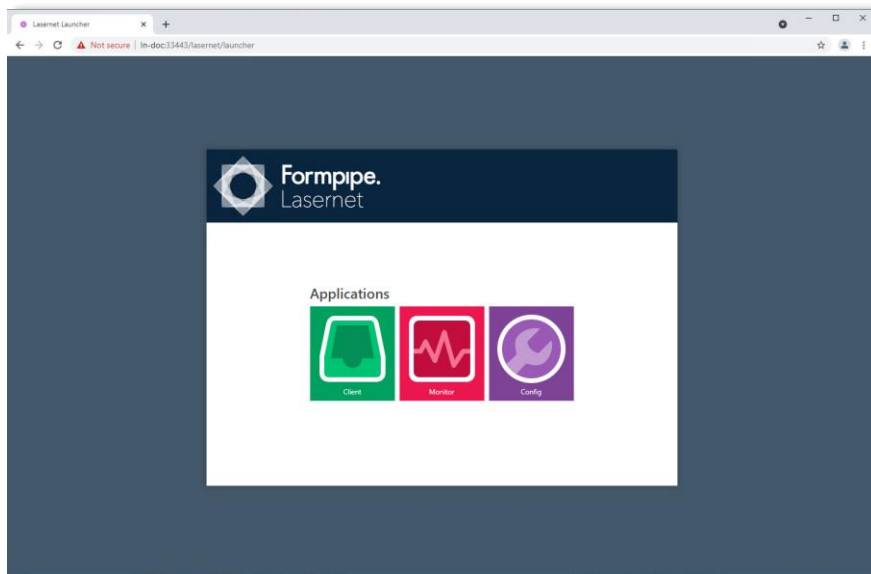


Miscellaneous.

Lasernet Launcher

A new site will start after installation which displays a browser launcher exclusively for web applications:

[https://\[server\]:\[port\]/lasernet/launcher](https://[server]:[port]/lasernet/launcher) or [https://\[server\]:\[port\]/lasernet](https://[server]:[port]/lasernet)



Note: New Web Launcher UI running at:

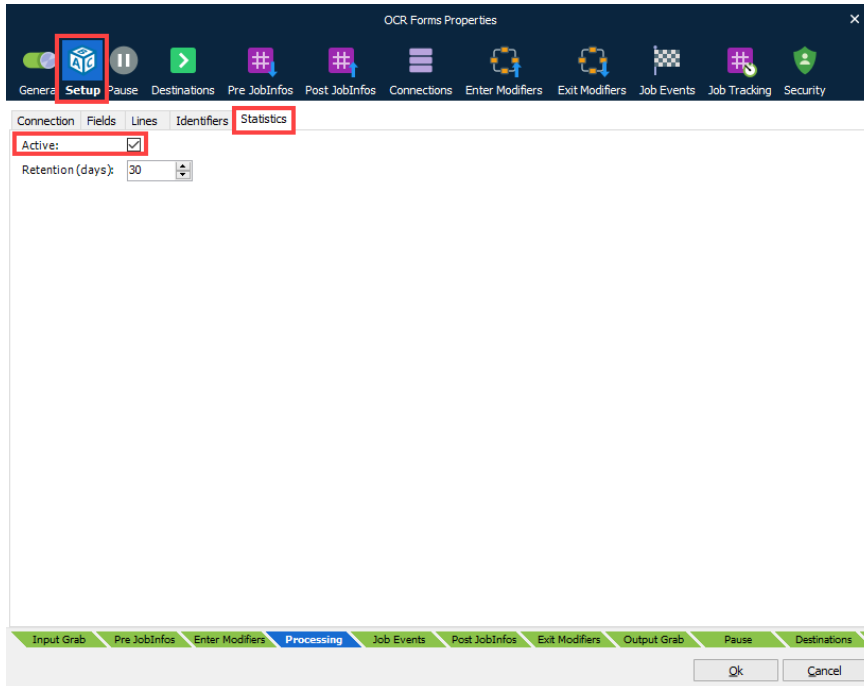
[https://\[server\]:\[port\]/lasernet/launcher](https://[server]:[port]/lasernet/launcher)

Scripting

New classes added to retrieve information about configuration.

OCR Engine

Added a new property in the Statistics tab to activate (default) / deactivate statistics DB for OCR Engine.

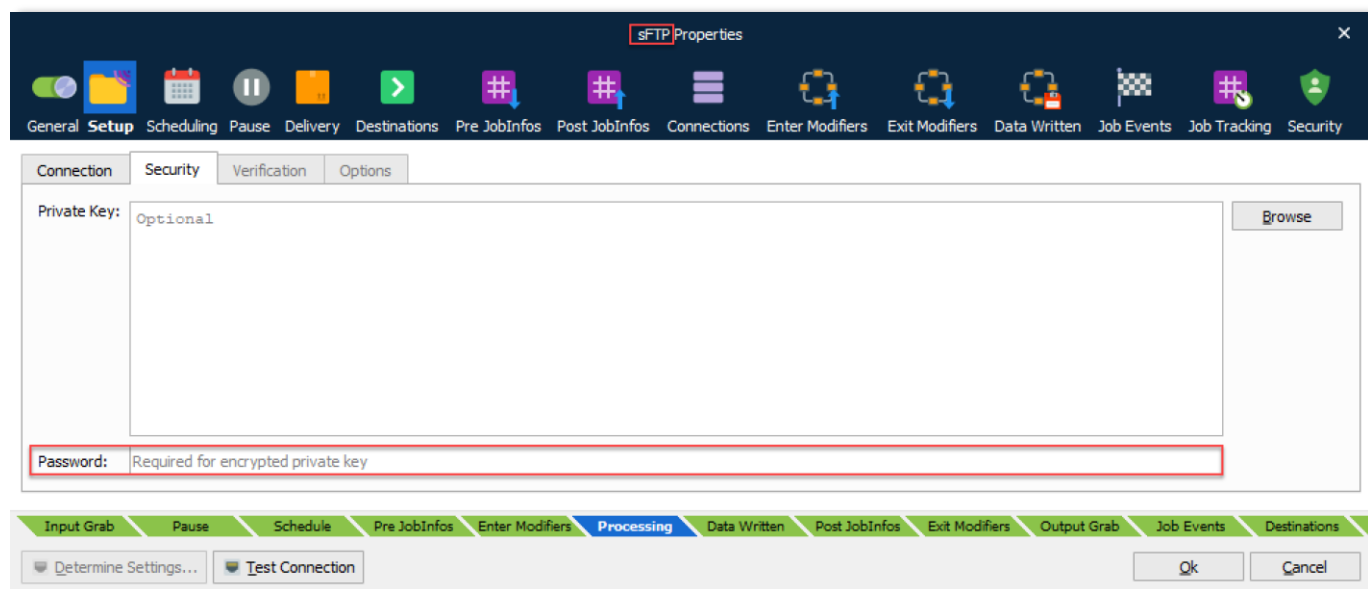


Microsoft SQL LocalDB

To support backup of VM in Azure the parameter `AUTO_CLOSE` is now set to OFF for the embedded Microsoft SQL LocalDB databases.

FTP Output

- Added support for supplying Encrypted PrivateKey password for SFTP.



Microsoft Windows 11.

Standard features in Lasernet 10.1 have been tested on Microsoft Windows 11 Version 10.0.22000. All tests have successfully passed the validation.

Maintenance Report.

The following fixes and enhancements are included with this version of Lasernet.

If you encounter difficulty while using Lasetnet, please contact support in the first instance.

Internal Ref.	External Ref.	Area	Details	Status
234994	-	Form Editor	Developer crashed when opening forms with non-existing Master reference	Fixed
229732	-	Form Editor	Scrolling text up/down did not always work, in the phrase's preview dialog, for DOCX output format	Fixed
230065	-	Form Editor	In-Place editor mode must de-activate selection of grab files	Fixed
230420	-	Form Editor	In-Place editor mode must ignore text editing of merged rearranges. Minor improvements and more error handling added to In-Place editor	Fixed
232318	-	Form Editor	The form crashed on closing the XSLX output sheet without saving	Fixed
236710	-	Developer	Export Object(s) and Add Form(s) dialogs list contained duplicates for forms and engines	Fixed
235163	-	Core	Validation checks added to the process of renaming a user, group or security role	Fixed
229501	-	Core	LocalDB backup file was not created when backup time was set to option "Scheduled" in server settings	Fixed
230321	-	Core	Crash with SQL Express DB login (SAException(NativeCode=1205, Text=Transaction (Process ID 55) was deadlocked on lock resources with another process and has been chosen as the deadlock victim	Fixed
230407	-	Core	Potential race condition in RestServer when removing a controller while a request is in progress	Fixed
234805	-	Client	Various fixes to the 'Show Auto Filter Row' functionality	Fixed
235506	-	Monitor	Licensed modules and general information was missing from the Licensing tab	Fixed
234659	-	OCR Editor	OCR Editor could not open documents via Client App for port numbers other than 33443 (default)	Fixed
250556	21599	OCR Editor	Port Field in OCR Editor was seen as a number and you cannot change it properly	Fixed
226226	-	Job Engine	Incorrect index was used when selecting from JobInfo table in some cases	Fixed
235032	-	HTTP	Running HTTP modifier with a Client Certificate could, in rare scenarios, cause a crash	Fixed
234907	-	OCR Engine	REST API returns an unexpected number of rows, in rare scenarios, when OCR Dictionary is activated but could not connect to DB	Fixed
236282	-	Web Client	Filenames sometimes missing in the Web Client when jobs were paused via OCR Engine	Fixed
268549	-	Web Client	Server settings are now loaded during start up to avoid a manually clear of local application storage if parameters in server settings have been changed	Feature enhanced
236695	-	Web Client	Manage Access Rights for Client Role on Config Server was not read properly and could cause that a user could list and select a none-allowed server instance	Fixed
267936	-	Web Client	The Select All jobs checkbox has been temporarily removed from UI to avoid heavy load on a server instance storing a large amount of jobs in the selected category (will be introduced again later with a new paging feature)	Fixed temporarily
229191	21048	Developer	An import could, in rare scenarios, overwrite existing object w/o notification	Fixed
224160	20662	Forms	PDFs formatted in A3 Landscape where PNG images were cut off at A4 margins	Fixed

Internal Ref.	External Ref.	Area	Details	Status
234999	16049	Forms	PDF format documents with URL links included in a merged block of text	Fixed
231217	-	Forms	Linefeed before a merged block of Asian characters could cause characters to disappear	Fixed
237126	21641	HTTP	Changed error message to warning, on certificates not being marked for client auth; a certificate does not require a list of intended usages	Fixed
235379	21540	OCR	Multiple Supplier Lists files, added to multiple OCR Engines, incorrectly loaded the contents added to the first loaded OCR Engine	Fixed
222624	-	Outlook Mail	Images set to attached in HTML forms was not visible in all mail clients	Fixed
252060	21706	SharePoint	Error parsing result when SharePoint INSERT Command fails, causing Output Port to not fail Job	Fixed
234861	-	OCR	Embedded Dictionary database was not compatible with Microsoft SQL LocalDB 2017	Fixed
235213	-	PDF Merger	Merge error when PDF contains a catalog with indirect reference to a Names dictionary	Fixed
230734	-	Config Server	Crashed if ServerSettings.json is not valid	Fixed